



ArcelorMittal

# COOLORISSIME

Arval  
by ArcelorMittal

PRESTIGE | TEXTURE | EXCELLENCE | FREEDOM | SUBSTANCE



# Substance

## INOX

Aesthetics First



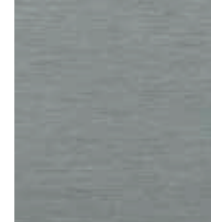
TOUCH GLOSS



TOUCH 2B



TOUCH TOP



TOUCH LINE



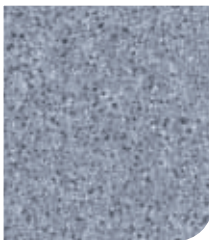
AMBIANT TI-GOLD\*



AMBIANT TI-LIGHT\*

## ALUMINIZED

Natural beauty forever



KRISTAL\*

## STEEL

Create, it will do the rest



INDATEN\*

**A**lthough we have taken great care to reproduce the colours in this colorchart, the illustrated colours are indicative only and we cannot guarantee that they are an exact match. Actual colour samples can be obtained if required.

**M**algré tout le soin apporté à la reproduction des teintes dans ce nuancier, nous ne pouvons vous en garantir l'exactitude. Des échantillons témoins sur support métallique sont fournis sur demande.

# Prestige

## PEARL 60



*Pearly shine*



MICA PERLA ▶ 19A5



GOLD PERLA ▶ 11B5



LILA PERLA ▶ 1417



SKY PERLA ▶ 15B4



APPLE PERLA ▶ 1611



CAMELIA PERLA ▶ 1343

## INTENSE 60



*Intensity of diamond*



TRIDIUM ▶ 9006



CHAMPAGNE ▶ 1733



COPPER ▶ 1968



BRONZE ▶ 1829



SKYNIGHT ▶ 1522

## IRYSA® 50



*Iridescent emotions*



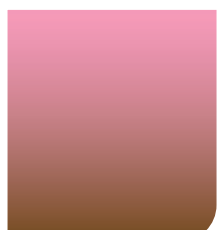
BUTTERFLY ▶ 79PN



CAMELEON ▶ 78VB

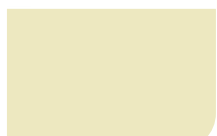


SCARABEA ▶ 73TS



OCTOPUS ▶ 79GP

## INTÉRIEUR 12



WHITE ▶ 912



Ces teintes peuvent présenter une différence de nuance et nécessitent de passer les commandes par façade complète en gardant le même sens de pose.



For these colours there may be shade variations between different lots, please ensure that all the material is ordered at the same timer for the whole façade, and erected in the same direction.

# Texture

## EDYXO® 50



*Cosy & textured effects*



BETULA ▶ 71B1



CHESNUT ▶ 78B5



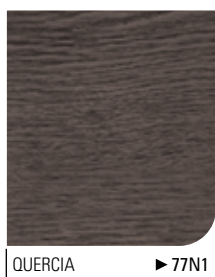
GAYA ▶ 72GA



VULCANO ▶ 73VU



SANTAL ▶ 78B9



QUERCIA ▶ 77N1



GALENA ▶ 79AZ

## NATUREL 35

*Matt attraction*



SAFRAN ▶ 43RB



PAPRIKA ▶ 48TU



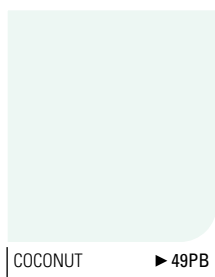
NUTMEG ▶ 37NU



REGALIZ ▶ 47NP



BLACKBERRY ▶ 49MC



COCONUT ▶ 49PB



SQUALE ▶ 47QE



MOKA ▶ 41BY



CAPPUCCINO ▶ 47LA



SALVIA  ▶ 49GM

## AUTHENTIC 35

*Soft glass*



PYRITE  ▶ 5986



NEW-ZINC ▶ 5740



PATINA ▶ 56E2



CUPPRA  ▶ 5216

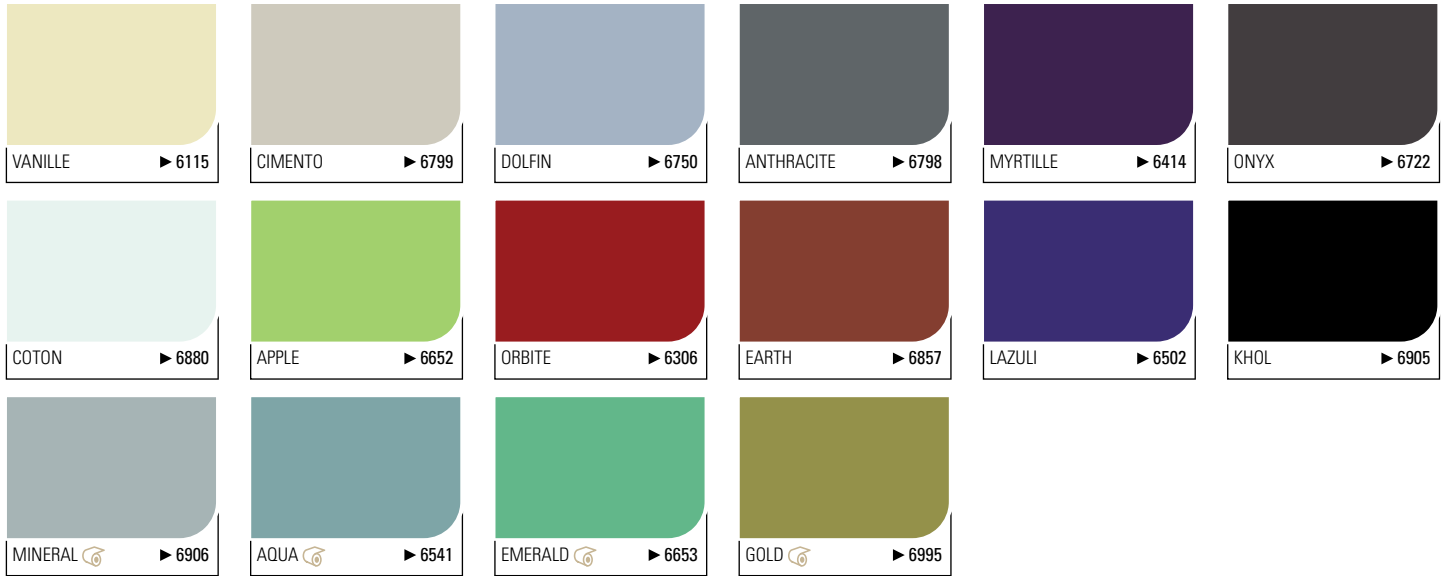


MAGNESIO ▶ 5735

# Excellence

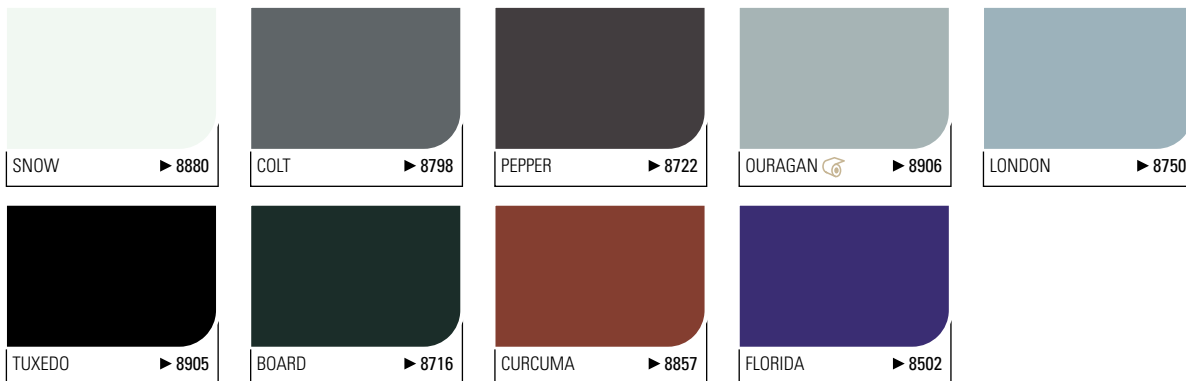
## HAIREXCEL® 60

*Design for life*



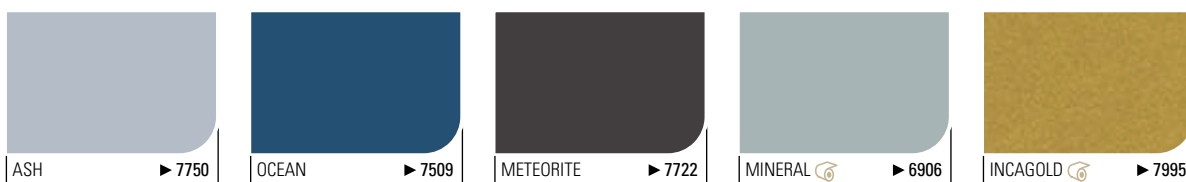
## R'UNIK 45

*The new generation*



## SINEA® 85

*Ultimate protection*



# Freedom







## HAIRULTRA® 35 - HAIRPLUS® 25

Colour freedom

 MILK ▶ 880	 OPALE [9010] ▶ 4936	 PAPYRUS [9001] ▶ 4932	 WHITEGREY [9002] ▶ 4902	 PLATINA [7035] ▶ 4710	[9010] Teinte indicative RAL/ Indicative RAL colour
 CREME ▶ 41C4	 GREGE ▶ 4113	 STONE [7032] ▶ 4703	 BEIGE [1019] ▶ 4131	 SIENNA ▶ 4807	 SEPIA [8014] ▶ 4824
 TILIA [6021] ▶ 4602	 CLOROFILA [6018] ▶ 4608	 RESEDA [6011] ▶ 4601	 MALACHITE [6005] ▶ 4659	 MINT [6029] ▶ 4636	 WINEBOTTLE [6003] ▶ 4615
 BRICK [2001] ▶ 4201	 CORAL [3000] ▶ 4309	 BAUXIT ▶ 4838	 RUBY [3003] ▶ 4306	 BORDEAU [8012] ▶ 4802	 PURPLE ▶ 4350
 SKY ▶ 4510	 SAHARA [1015] ▶ 4156	 SAND [1002] ▶ 4102	 LEMON [1018] ▶ 4155	 AFRICA ▶ 4847	 TANZANITE ▶ 4414
 ZINC ▶ 4750	 MOUSE [7037] ▶ 4752	 CACAO [7006] ▶ 4708	 BASALT [7015] ▶ 4771	 SLATE [7016] ▶ 4727	 GRAPHIT [7022] ▶ 4702
 SAFIR [5014] ▶ 4534	 MURANO [5010] ▶ 4511	 LAGOON ▶ 4592	 ULTRAMARIN [5002] ▶ 4523	 ABYSS [5008] ▶ 4505	 EBONIT [9005] ▶ 4942



Radiance

 SILVER [9006] ▶ 4930	 STAHL ▶ 4541	 SKYALU ▶ 45G5	 TITANIUM [9007] ▶ 4959	 MOSS ▶ 4688	 MARIN ▶ 4542
--	---	--	---	--	---

# Guide de choix

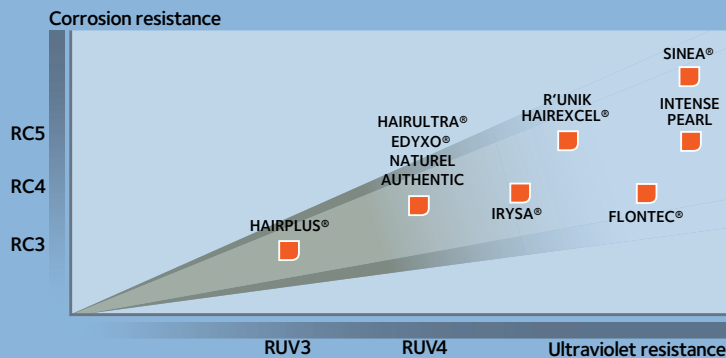
## COATING GUIDE

### EXTÉRIEUR/EXTERNAL

REVÊTEMENTS ORGANIQUES ORGANIC COATINGS	Catégorie / Category		EN10169		Urbaine et industrielle / Urban and industrial			Marine				Spéciale / Special		
	DIN 55634	NFXP 34301	Catégorie UV / UV Category	Catégorie corrosion / Corrosion category	Rurale non polluée / Unpolluted rural	Normale / Normal	Sévère / Severe	20 à 10 km / 20 to 10 km	10 à 3 km / 10 to 3 km	3 à 1 km / 3 to 1 km	1 km à 300m / 1 km to 300 m	Mixte / Mixed	Fort U.V. / High U.V.	Particulière / Special
HAIRPLUS®	III	IV	RUV3	RC3	A	A	C	A	B	C	C	C	B	C
HAIRULTRA®/EDYXO®/IRYSA®	III	VI	RUV4	RC4	A	A	B	A	A	A	B	B	A	B
NATUREL/AUTHENTIC	III	VI	RUV4	RC4	A	A	B	A	A	A	B	B	A	B
HAIRFLON® 25	III	IV	RUV4	RC3	A	A	C	A	B	C	C	C	B	C
HAIRFLON® 35	III	VI	RUV4	RC4	A	A	B	A	A	A	C	B	A	B
KEYRON 200	III	V	RUV3	RC5	A	A	B	A	A	A	B	B	B	B
HAIREXCEL®	III	VI	RUV4	RC5	A	A	B	A	A	A	B	B	A	B
R'UNIK	III	VI	RUV4	RC5	A	A	B	A	A	A	B	B	A	B
INTENSE/PEARL/FLONTEC®	III	VI	RUV4	RC5	A	A	B	A	A	A	B	B	A	B
SINEA®	III	VI	RUV4	RC5	A	A	B	A	A	A	A	B	A	B

### INTÉRIEUR/INTERNAL

REVÊTEMENTS ORGANIQUES ORGANIC COATINGS	Catégorie / Category		EN10169		Non-agressive / Not aggressive			Faiblement agressive / Slightly aggressive	Aggressive	Très agressive / Very aggressive
	DIN 55634	NFXP 34301	Catégorie humidité / Humidity category	Faible hygrométrie / Low humidity	Moyenne hygrométrie / Average humidity	Forte hygrométrie / High humidity	Humide (forte hygrométrie) / Humid (high humidity)	Très humide (très forte hygrométrie) / Very humid (very high humidity)	Saturée (très forte hygrométrie) / Saturated (very high humidity)	
INTÉRIEUR	II	II	CPI2	A	B	C	C	C	C	
HAIRPLUS®	III	IIIa	CPI3	A	A	B	C	C	C	
HAIRULTRA®/EDYXO®/IRYSA®	III	IIIa	CPI4	A	A	A	B	C	C	
NATUREL/AUTHENTIC	III	IIIa	CPI4	A	A	A	B	C	C	
HAIRFLON® 25	III	IIIa	CPI3	A	A	B	C	C	C	
HAIRFLON® 35	III	IVb	CPI4	A	A	A	A	B	C	
KEYRON 150	III	IVb	CPI4	A	A	A	A	B	C	
KEYRON 200	III	IVb	CPI5	A	A	A	A	B	C	
HAIREXCEL®	III	IVb	CPI4	A	A	A	A	B	C	
R'UNIK	III	IVb	CPI4	A	A	A	A	B	C	
INTENSE/PEARL/SINEA®	III	Vc	CPI5	A	A	A	A	B	C	



A - Le produit est adapté / The product is suitable  
 B - Suivant enquête / Subject to approval  
 C - Non adapté / Not suitable



# Donnez vie à vos émotions

**Arval free your imagination**

## Explorez de nouvelles façades

Bienvenue dans un monde sublimé par l'acier. Dépassez les standards, libérez votre imagination, Arval by ArcelorMittal met en scène vos défis les plus audacieux.

Arval construit demain en innovant avec vous.

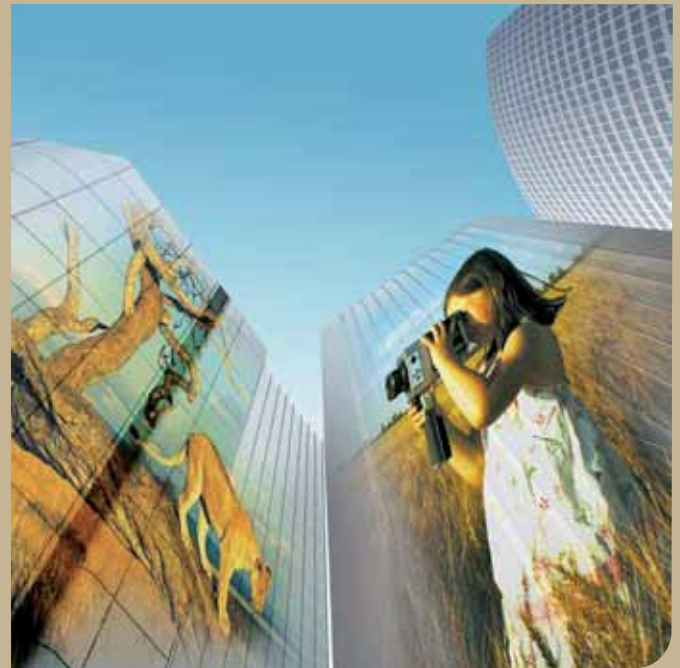
## Explore new façades

Welcome to a world enhanced by steel. Surpass expectations and free your imagination, Arval by ArcelorMittal realises your most innovative challenges.

Arval builds the life of tomorrow with you.

*"L'architecte doit se rendre le metteur en œuvre de la nature"*  
Etienne-Louis Boullé (1728-1799)

*"The architect should aspire to put nature on stage"*  
Etienne-Louis Boullé (1728-1799)



## Muralys

### Bienvenue dans un monde inexploré !

Avec Muralys, entrez au cœur d'une innovation associant technologie de l'image et architecture contemplative.

En façade ou dans votre intérieur, le procédé Muralys permet de transférer votre photo numérique, dessin ou texte au cœur d'un revêtement thermodurcissable sur des parements métalliques d'habillage extérieur ou intérieur.

Le Transfert Numérique Moléculaire (TNM) est le support de vos espaces d'expression pour imaginer et personnaliser une ambiance visuelle exclusive.

Liberté des couleurs et des effets décoratifs, osez marquer les esprits et l'espace ; Arval met en image votre univers graphique.

### Welcome to an unexplored world !

With Muralys, you can go right to the heart of innovation by linking up technology with architectural contemplation.

Decorating a façade or dressing an interior can be achieved via the Muralys process by sending your digital photos, drawings or texts to the very heart of thermosetting coating on outer or inner wall cladding.

This new medium supported by Molecular Digital Transfer (MDT) increments spaces where exclusive customized visual environments can be imagined and brought to life.

Feel free with your colours and decorative effects and be bold enough to imprint them on space and mind ; Arval is here to transpose your graphic universe into images.





# Plus haut dans la technicité

## Enhanced technicality

Pérennité des solutions et des teintes, adaptation aux conditions climatiques extrêmes, aux agressions et à la pollution, Arval by ArcelorMittal structure son offre selon vos attentes et celles des utilisateurs.

Arval by ArcelorMittal organises its offer according to your expectations and those of the users, whether it is durable solutions and colours, adaptation to extreme weather conditions, to aggressions and pollution.

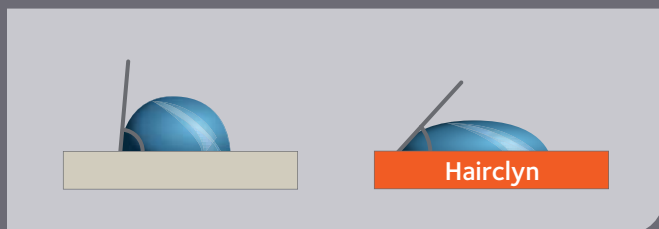


Hairclyn est un acier prélaqué innovant aux propriétés hydrophiles permettant un auto-nettoyage de la façade par les eaux de pluie et un encrassement limité.

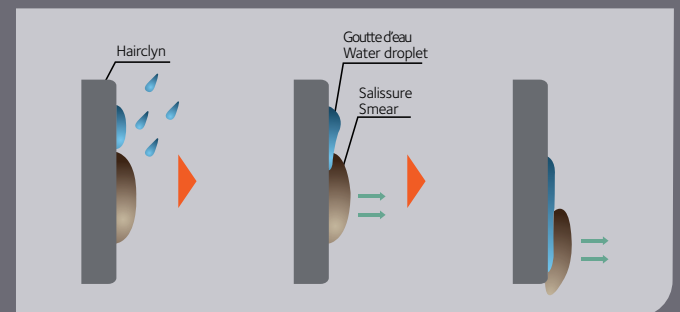
Hairclyn est accessible dans la gamme complète des couleurs d'Hairplus®, Hairultra et Hairexcel®.

Hairclyn is an innovating coating with hydrophilic properties allowing a great ease of cleaning with rainfall and a high reduction of embedded dust.

Hairclyn is available in the whole range of colour on Hairplus®, Hairultra and Hairexcel®.



Contact angle



Schematic of coating Hairclyn



## Le nouveau revêtement anti-graffiti

Dans les milieux urbains, les graffitis sont une nuisance visuelle systématiquement associée à une connotation sociale négative. Que ce soit sur des façades privées ou publiques cette pollution dévalorise le bâtiment.

Avec Flontec®, les graffitis disparaissent à l'eau et au nettoyeur haute pression. Flontec® est disponible dans différents coloris ainsi que sur la gamme Pearl. Nous consulter.

## The new anti-graffiti coating

Graffiti on public or private façade is a problem in the urban environment that reduces the value of the building. It generates a negative social connotation.

On Flontec®, graffiti can be removed easily with cold water and high pressure washer.

Flontec® is available in a large range of colours as well as the range Pearl. Consult us.

# CO LOR ISSIME

Arval  
by ArcelorMittal

## ArcelorMittal International HQ

12 C, Rue Guillaume Kroll  
L-1882 Cloche d'Or  
Luxembourg  
T: +352 4792 1

## Austria

AMC Austria GmbH-Arval  
Lothringenstraße 2  
A-4501 Neuhofen an der Krems  
T: +43 7227 5225  
PFLAUM  
Ganglgutstraße 89  
A-4050 Traun  
T: +43 72 29 64 584

## Belgium-Belgie

ArcelorMittal Construction-Arval  
Lammerdries 8  
2440 Geel  
T: +32 14 56 39 43

## Croatia-Hrvatska

ArcelorMittal Construction Croatia  
Bani bb  
10000 Zagreb  
T: +385 1 6607 532

## Czech Republic-Česká Republika

ArcelorMittal Construction-Arval  
CZ- 110 00 Praha 1  
Biskupský dvůr 7  
T: +420 272 072 019

## Denmark-Danmark

ArcelorMittal Construction Denmark  
c/o RC Stål Aps  
Tolbodgade 8  
DK-4700 Næstved  
T: +45 40 68 89 87

## France

ArcelorMittal Construction-Arval  
16 route de la Forge  
F-55000 Haironville  
T: +33 3 29 79 85 85

## Germany-Deutschland

ArcelorMittal Construction-Arval  
AMC Deutschland GmbH  
Münchener Strasse 2  
D-06796 Brehna  
T: +49 3 49 54 455 0

## Hungary-Magyar

AMC Hungary  
H-1211 Budapest  
Weiss Manfréd u. 5-7  
T: +36 1 350 28 76

## Italy-Italia

ArcelorMittal Construction-Arval  
AMDS Italia  
Viale Sicilia 97  
IT-20052 Monza  
T: +39 039 28 12 226

## Lithuania-Lietuva

ArcelorMittal Construction Baltic  
Arval  
Ukmerges g. 369A-602  
LT-12142 Vilnius  
T: +370 5 246 15 71

## Netherlands-Nederland

ArcelorMittal Construction  
Biezenwei 2  
NL-4004 MB Tiel  
T: +313 44 63 17 46

## Norway-Norge

ArcelorMittal Construction-Arval  
Dyrskuevelen 16  
N-2040 Kliftn  
T: +47 63 94 14 00

## Poland-Polska

ArcelorMittal Construction-Arval  
Konopnica 120  
PL-96200 Rawa Mazowiecka  
T: +48 46 813 28 00

## Portugal

ArcelorMittal Construção-Arval  
Estrada Nacional 3 (Km 17,5)  
Apartado 14  
PT-2071-909 Cartaxo  
T: +351 263 400 070

## Romania-România

ArcelorMittal Construction-Arval  
136 Biruintei Bdul, DN3 Km 14  
077145 Pantelimon, Jud. Ilfov  
T: +40 21 312 45 17

## South Africa

ArcelorMittal Construction-Arval  
The Place - 1 Sandton Drive  
Sandhurst - Sandton 2196  
Gauteng  
T: +27 (0) 11 722 8621

## Slovakia-Slovenská Republika

ArcelorMittal Construction-Arval  
Rožňavská 24  
SK-82104 Bratislava  
T: +421 2 321 326 04

## Spain-España

ArcelorMittal Construcción-Arval  
Carretera Guipuzcoa Km 7,5  
E-31195 Berrioplano (Navarra)  
T: +34 948 138 700

## Sweden-Sverige

ArcelorMittal Construction  
Sverige AB, Arval  
Västanvindsgatan 13  
SE-65221 Karlstad  
T: +46 (0)54 68 83 00

## Switzerland-Schweiz

ArcelorMittal Construction Suisse SA  
Industriestrasse 19  
CH - 8112 Otelfingen  
T: +41 56 296 10 10

## Middle East & International

ArcelorMittal Construction  
International Arval  
Studacherstr. 7b  
CH-5416 Kirchdorf  
T: +41 56 296 10 10

## Caribbean

### Guadeloupe

ArcelorMittal Caraïbes  
51 rue Henri Becquerel  
ZI de Jarry  
F-97122 Baie Mahault  
T: +590 26 82 03

### Martinique

ArcelorMittal Caraïbes  
Zip de la Pointe des Grives  
F-97200 Fort de France  
T: +596 60 60 00

### Saint Martin

ArcelorMittal Caraïbes  
ZAC Lot 3 et 4 La Savane  
F-97150 Saint Martin  
T: +590 52 98 04

### Dominican Republic

ArcelorMittal Caraïbes  
Prolongacion Av. Charles de Gaulle, 131  
Dominican Republic-Santo Domingo  
T: +1 (809) 483 2790

### Guyana

ArcelorMittal Caraïbes  
ZI de Degrad des Cannes BP 418  
F-97300 Remi-Remont-Joly  
T: +594 25 52 21

## Indian Ocean

### Réunion

ArcelorMittal Construction Réunion  
ZIN°2-44 rue Paul Verlaine  
BP 802  
F-97825 Le Port  
T: +262 42 42 42

### Mauritius

Profilage de l'ocean Indien Arval  
Route de la Filature  
Mauritius-Riche Terre  
T: +230 248 17 05